



**2023
Annual
Report**



the nest
collective



the nest collective

The Nest Collective

LEGAL NAME

The Nest Collective NZ Charitable Trust

ENTITY TYPE

Charitable Trust. Charities Services registration number CC58638.

POSTAL ADDRESS

9 Ron Deal Way, Eponi, Lower Hutt 5011

GST NUMBER

133-466-231

EMAIL

hello@thenestcollective.org.nz

WEBSITE

www.thenestcollective.org.nz





Board of Trustees



WENDY THOMPSON

Chairperson (joined 31 January 2023)

Wendy has more than a decade of experience in the charity and not-for-profit sector - most recently as the General Manager of Bellyful NZ. A trained pharmacist (now not practising), Wendy has worked in hospitals in Aotearoa and the UK and has also held a number of volunteer roles within charitable organisations.

Being a mother of three adult children, including premature twins, Wendy has first-hand knowledge of the significance of supporting whānau. Together with her strong leadership experience, Wendy brings a passion to provide practical help to whānau in need.



NATALIA KARACAOĞLU

Secretary, National Manager

Natalia has a background in international development and is passionate about fighting for equality in our society. She completed a Bachelor of Commerce degree at the University of Otago majoring in Finance and Economics. Working previously in the wealth management industry for JBWere and Forsyth Barr before moving to Greece to become a coordinator for Samos Volunteers, a refugee organisation in Greece. She continues on the Board of Samos Volunteers as their Treasurer. On returning to New Zealand she worked at the Council for International Development.

Natalia is passionate about helping New Zealand whānau while also creating a fantastic community amongst volunteers, crafters and social workers.



LIBBY PRISCOTT

Trustee (Branch Representative), Auckland Manager

Libby is a trustee of The Nest Collective and also manages the Auckland branch. Since leaving the paid workforce, Libby has spent her time raising her two children and volunteering for Plunket and Little Sprouts. During her time as a Branch Manager at Little Sprouts, Libby saw first-hand the significant difference that thoughtfully compiled baby boxes can make to whānau in need.

Libby has a Bachelor of Commerce degree, majoring in Economics and Business Systems. Her prior background as a Business Analyst motivated her to ensure that upon the establishment of The Nest Collective, it was imbued with appropriate governance, systems and procedures that will underpin an enduring and sustainable future.



Board of Trustees



GLEN WILLIAMS

Trustee, Treasurer

As treasurer, Glen brings considerable accounting experience to his role with The Nest Collective. Glen is a fully qualified member of the Chartered Accountants Australia and New Zealand. Glen has worked with the Anglican Missions Board, the Council for International Development and other clients. Glen has worked with young people for over 25 years and is passionate about helping young people and whānau of New Zealand.



NICOLETTE LUKE

Trustee

Nicolette is a financial services lawyer with experience across both the private and public sectors. She is passionate about facilitating positive change for whānau across New Zealand and through working with The Nest Collective, is keen to ensure that all babies have access to equal opportunities from birth.

Nicolette is on the Women in Law Committee and is also a volunteer lawyer with Mother's Project which provides support for mothers in prisons, enabling them to maintain meaningful connections with their children.



DR. KATE PRICKETT

Trustee

Dr. Kate Prickett is Director of the Roy McKenzie Centre for the Study of Families and Children at Victoria University of Wellington. As a researcher, her work focuses on how family contexts, such as poverty experiences and parenting behaviours, shape child development, and how understanding these links can inform government policy and programmes aimed at supporting whānau.



TONY SPICER

Trustee

Tony has a comprehensive background working in social services. He has 40 years' experience working with whānau, child protection and mediation in both Government and non-Government agencies. Tony is a father and grandfather with a strong commitment to social justice. He is passionate about ensuring that whānau that are marginalised are equipped and supported and not further disadvantaged by systems.



Who we are

The Nest Collective desires to see all Aotearoa New Zealand babies given a great start in life. We provide baby essentials to whānau in need.

Our packs include new, pre-loved, handcrafted and repurposed essentials such as clothing, toys, nappies, bedding, books and more.

We have branches in Auckland, Gisborne, Kāpiti, Wellington, Christchurch and Dunedin which serve whānau from Northland to Southland. These branches rely on donations (both physical and financial) to provide free pēpi packs to whānau via social workers, midwives, kaiāwhina and local community partners.



What we do





Vision

Our vision is that all New Zealand babies are given a great start in life to enable them to flourish.

Mission

The Nest Collective partners with social workers and other local community organisations to provide free packs of baby essentials for whānau in need.

Our packs result in improved living standards for babies and children, a reduced financial burden for whānau, an improvement in mental health for parents and an ability to focus on other aspects of whānau life once the essentials are provided.

Values



COLLABORATION

We share and support each other. We work together to maximise impact.



INTEGRITY

We are trustworthy. We are transparent in all we do.



EQUITY

We advocate for the inclusion of all and strive for fairness. We redistribute resources. We promote the importance of all Aotearoa New Zealand pēpi receiving the best start in life.



MANAAKITANGA

We have kindness, respect and compassion for all. We give everything as a gift with no expectation of return. At The Nest Collective, manaakitanga is about helping to foster a culture in which communities give what they can to support each other.



SUSTAINABILITY

We care for the planet. We rehome, recycle, reuse and repurpose as much as possible.



Why we do it



ONE IN EIGHT (12.5%) New Zealand children live in households reporting **MATERIAL HARDSHIP**.



Almost three in four households in hardship report being **VERY LIMITED IN THEIR ABILITY TO PURCHASE CLOTHES**.



Children living in areas with the highest deprivation scores are **TWICE AS LIKELY TO BE ADMITTED TO HOSPITAL** than children in areas with the lowest scores.



Sudden unexpected death in infancy is a leading cause of **PREVENTABLE DEATH** among babies in Aotearoa New Zealand. The ideal place for a baby to sleep is in their own safe sleeping space, on a safe mattress with safe bedding.



Many whānau face **IMPOSSIBLE FINANCIAL DECISIONS** such as choosing between paying the power bill or buying warm clothing for their children.



Not having enough resources to support a baby's wellbeing, such as nappies and warm clothes, creates stress. This stress contributes to **HIGHER RATES OF POSTPARTUM DEPRESSION** among low-income mothers.



MATERIAL RESOURCES ARE CRITICAL to providing children with an opportunity to reach their health, educational and social potential.



Investment in the **FIRST 1,000 DAYS IS VITAL** to ensure that every tamaiti (child) gets a great start in life.

“ *It has to be one of the biggest blessings that I've received in my life. Even though it's stuff...it blessed us to get us on our journey to parenthood.* ”

– Quote from whānau



What is in a pack?

Every pack contains the essentials that a baby needs for its wellbeing and safety from birth to age one and often beyond. Every item included serves this purpose and our packs were created through consultation with social workers, community partners and experts.

Our packs are designed to include the critical necessities to reduce material hardship. We individually assess the needs of each baby because every whānau we help is facing their own unique challenges.

Our packs contain clothing (prem to size 2), bedding, nappies and wipes, toys, books, toiletries, safety items and more. We purchase thermometers, sleeping bags and feeding items at reduced cost and are gifted a number of new items including nappy balm, bath products, reusable maternity pads, breast pads and handcrafted items. These are included alongside donations of pre-loved and handcrafted baby items.

COST PER BABY PACK

\$140

A single, standard baby pack costs us \$140 on average. This includes associated pack costs including packaging, printing and pack items.

RETAIL VALUE PER BABY PACK

\$1,200

The retail value of a standard baby pack is estimated at \$1,200. This excludes all additional items such as prams, bassinets, baths, cots and baby carriers.

NUMBER OF ITEMS PER PACK

150+

Every pack includes over 150 essentials to cover nappy changing, bath time, feeding, clothing, safe sleep, bedding, learning, and play, all in support of healthy development.

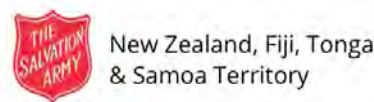




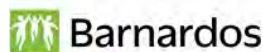
the nest collective

Who we work with

We work alongside social workers, kaiāwhina, midwives and nurses from over 130 community partners. This allows our community partners to focus on their primary role, while we provide the material items to give pēpi the best start in life. Our community partners include the following:



Te Hauora o Turanganui a Kiwa Ltd
Turanga Health



Te Whatu Ora
Health New Zealand



Our people

The Board currently consists of seven people and is made up of several professionals who are all experts in their chosen fields. The Board includes Chairperson, Secretary, Treasurer and Branch Representative Trustee. The Board's expertise ensures a focus on strong governance and leadership.

Our national Management team consists of three part-time Managers who focus on national operations and supporting each branch.

Each branch runs on the energy and dedication of volunteers. A Branch Manager in each location oversees the team of volunteers who contribute to each branch.

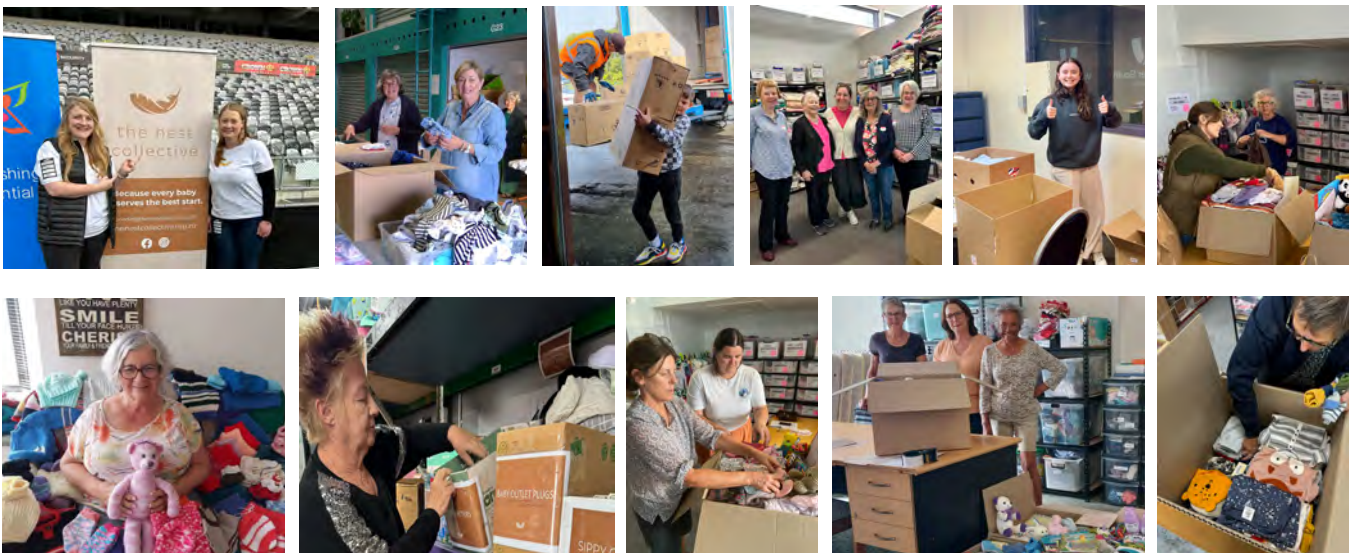
Our volunteers

The Nest Collective thrives thanks to 130 dedicated branch volunteers who are the heart and soul of our work. From collecting, washing and sorting donations to managing grants and administrative tasks, their tireless efforts ensure that we can provide high-quality essentials to whānau in need.

We extend our deepest gratitude to each volunteer for their invaluable contributions of time and aroha. Thank you for all that you do in supporting whānau across our country.

**“ It’s a way of giving back.
Who doesn’t love babies!
Giving families a helping
hand right at the beginning
can impact a whole life. ”**

– The Nest Collective volunteer.

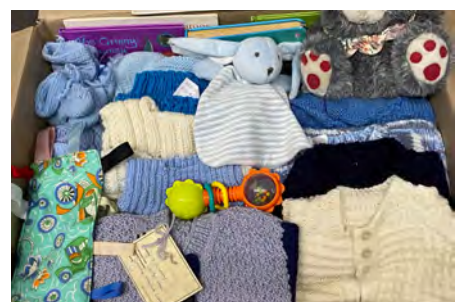




The Nest Makers

Our dedicated crafters, known as 'The Nest Makers,' are based across New Zealand and number more than 1,100! Not only do they knit, crochet, and sew to create clothing, bedding and more, these talented volunteers also repurpose fabrics and yarn to save items from landfills and breathe new life into previously worn or unsuitable items.

Thank you to every Nest Maker for donating your skill, love and resources to create beautiful handcrafted items that will be treasured for many years by those who receive them.





Emergency and Crisis Response

AUCKLAND AND NORTHLAND FLOODING

Following the flooding in Auckland and Northland, The Nest Collective Auckland mobilised support efforts, thanks to funding from Red Cross and Ministry of Social Development to provide essential items including bassinets, cots, prams, portacots, capsules, car seats, clothing, bedding and towels.

Our volunteers continued to support those impacted in the many months following, witnessing an increasing number of whānau impacted by the flooding, job losses and/or the cost of living crisis seeking assistance. The Nest Collective Auckland also had a surge in requests for reusable nappies and sanitary kits, offering not only financial relief but also preparedness for future emergencies.

CYCLONE GABRIELLE SUPPORT IN TAIRĀWHITI GISBORNE

The Nest Collective Gisborne provided rapid response to those across Tairāwhiti in the days and weeks immediately after Cyclone Gabrielle hit. Our volunteers provided essential supplies at emergency relief centres and through local community partners.

Having established strong, trusted relationships across the community, our volunteers were able to supply nappies, wipes, formula, safe sleeping spaces and other baby essentials whilst many other agencies were still mobilising. With a desperate need

for nappies and other items, thanks to our amazing volunteers and wider community, we were able to helicopter supplies into the region. This was proof that we are able to be nimble, creative and harness the generosity of community support in effective ways despite our size.

In the year following Cyclone Gabrielle, as The Nest Collective Gisborne continues to support whānau who are rebuilding their lives, we have provided the following;

- A nearly 40% increase in pēpi packs
- 170 pēpi packs given to those in need
- 30,000 items gifted
- 560% increase in the number of safe sleep spaces provided
- 600% increase in the number of prams gifted.

Cyclone Gabrielle has had an ongoing impact across the community, but the willingness of everyone to chip in and give what they can has been incredible to see.

To each and every volunteer who went above and beyond to serve their community, despite many facing their own challenges, you are all amazing and we thank you.





the nest collective

Impact in 2023

We've provided 857 packs to pēpi and whānau in every region across Aotearoa New Zealand (bar Nelson Tasman, Taranaki and West Coast, South Island). That is more than 857 years worth of baby items and is valued at a combined total of over \$1 million dollars worth of essentials.



857

PACKS gifted to babies and whānau



128,000+

ESSENTIAL ITEMS gifted



133

COMMUNITY PARTNERS



130+

VOLUNTEERS across six branches



59

DROP-OFF POINTS



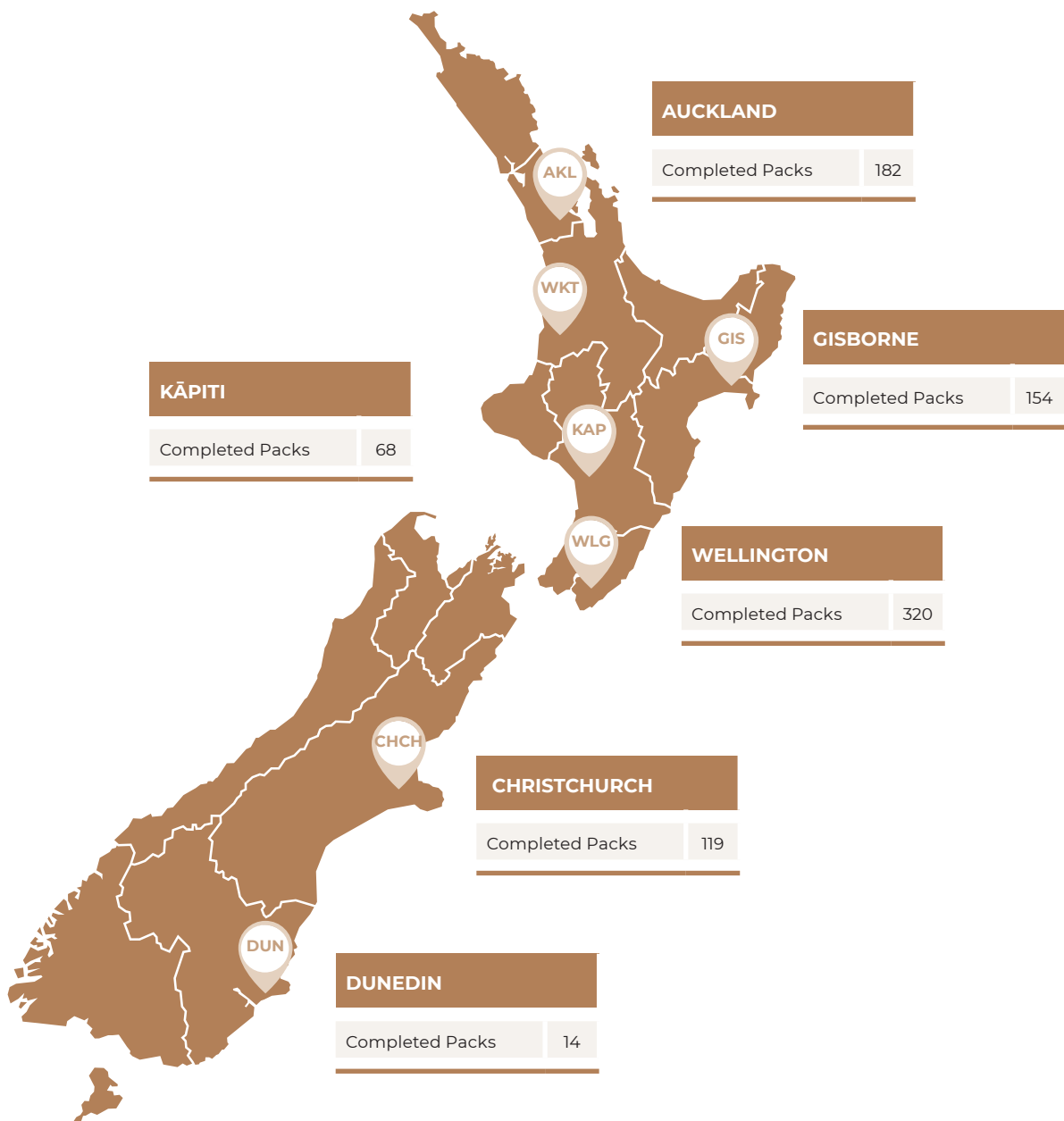
1,100+

CRAFTERS 'The Nest Makers'





Completed packs by branch



TOTAL PACKS 2023:

857 (19% INCREASE ON 2022)



Growth plan

GREATER REACH

2023

We broadened The Nest Collective's geographical footprint by establishing a new branch in Dunedin. A number of branches moved to new, larger premises which enabled the streamlining of processes, greater efficiency and an overall capacity to work with more community partners.

MEET THE INCREASED NEED

2024

We anticipate a growing demand for our service. By strengthening our processes and boosting our volunteer capacity, we will continue to connect with community partners to meet this increased need.

RURAL & REMOTE SUPPORT

2025

Increase our focus on underserved communities including rural and remote areas.

Key challenges

FUNDING STABILITY

We have concentrated on grant funding to cover our costs which has been a successful strategy again in 2023. However long term this is not guaranteed and we need multiple, sustainable funding streams.

DONATION SUPPLY

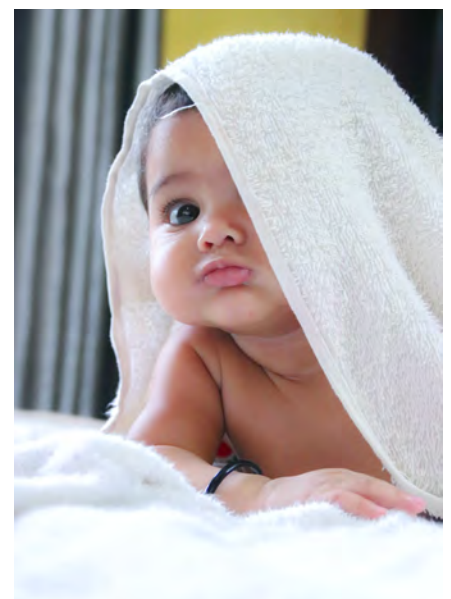
As the cost of living continues to rise, we have seen a decline in the quantity and quality of pre-loved donations. Our packs rely on high-quality pre-loved donations to keep the cost - and our environmental impact - sustainable.

VOLUNTEER CAPACITY

Volunteers are the backbone of our charity, however we will experience fluctuations in resourcing by relying on an unpaid workforce.

ITEM SUPPLY

As we grow, sourcing a consistent supply of items to meet this demand continues to be a challenge due to continued supply chain and stock challenges experienced by our suppliers.





Our key supporters

Our heartfelt thanks to these grants, trusts, foundations, businesses and community groups for their support.

NATIONAL

- Earthwise
- Lottery Community Fund
- Puffin Trust
- Z Energy (Good in the Hood)

AUCKLAND

- Community Organisation Grants Scheme (COGS) Auckland
- COGS Manukau
- COGS Waitākere
- COGS Whangārei
- Foundation North
- Giving Machines
- MSD Community Support Fund
- Puffin Trust
- Red Cross

WAIKATO

- COGS Hamilton City
- COGS Tongariro

GISBORNE

- Busy Bees
- COGS Tairāwhiti
- CommonGood Foundation
- Grassroots Trust Central
- Honest Wolf
- MSD Community Support Fund
- Sunrise Foundation

- Trust Tairāwhiti
- Westpac

KĀPITI

- COGS Manawatū / Horowhenua
- COGS Whitireia
- Kāpiti Coast District Community Grants
- Pelorus Trust

WELLINGTON

- Aspiring Walls
- COGS Hutt Valley
- Hutt Mana Charitable Trust
- Nikau Foundation
- Wellington Children's Foundation
- Wellington Social and Recreation Fund

CHRISTCHURCH

- Christchurch Casinos Charitable Community Trust
- Pub Charity
- Strengthening Communities Fund

DUNEDIN

- COGS Coastal Otago
- Dunedin Casino Charitable Trust
- Dunedin City Council Waste Minimisation Grant
- Dunedin City Council Community Grant
- Dunedin Craft Beer and Food Festival

A special thank you for providing national support to:





What people are saying



“ The support has definitely helped a positive start to their parenting journey. ”

– Social Worker

“ You have helped alleviate much stress and now māmā can rest and look forward to welcoming her baby knowing she has everything she needs and so much more. ”

- Community Partner



“ Thanks to you my daughter had clothing. ”

– Parent





Example Pēpi Pack

SLEEPING & BEDDING

Merino sleeping bag
Cotton sleeping bag
Bassinet or cot sheets
Cotton swaddle (wrap or modern style)
Cotton quilt (bassinet or cot size)
Blanket - wool (bassinet or cot size)
Blanket - cotton
Muslin wraps

CLOTHING (IN ALL SIZES NEWBORN - 1 YEAR)

Merino outfits
Nightgown
Onesies/bodysuits
Jumpsuits/all-in-ones
Tops and singlets
Pants and shorts
Cardigans or vests (wool)
Sweatshirt/jackets
Beanies (cotton and wool)
Sunhat
Socks
Booties
Shoes
Scratch mittens
Dresses

WELLBEING ITEMS

Nappy cream
Body wash/shampoo
Teether
Thermometer
Safety outlet plugs
Reusable breastpads

FEEDING

Sipper cup
Spoon
Bowl
Feeding bibs
Dribble bibs
Burp cloths

NAPPIES & CHANGING

Disposable nappies (newborn and infant size)
Disposable wipes
Reusable wipes/flannels
Towel
Change mat

LEARNING & DEVELOPMENT

Books
Baby toys (mix of rattle, soft toy, taggy)

PROVIDED, BY REQUEST, IF AVAILABLE

Play gym/baby mat/bouncer
Safe sleeping space (bassinet/pēpi pod/moses basket/cot)
Bath
Pram
Carrier/wrap
Breast pump
Bottles
Steriliser
Breastfeeding pillow
Premature baby clothing
Reusable nappies
Reusable maternity pads
Mattress protector

He taonga te tamaiti.
The child is a precious taonga.



the nest collective

 hello@thenestcollective.org.nz

 thenestcollective.org.nz

   [thenestcollectivenz](https://www.linkedin.com/company/thenestcollective/)

Annual Performance Report 2023

The Nest Collective NZ Charitable Trust
For the year ended 31 December 2023

Contents

3	Chairperson's Report
5	National Manager's Report
7	Entity Information
9	Approval of Financial Report
10	Statement of Service Performance
11	Statement of Financial Performance
12	Statement of Financial Position
13	Statement of Cash Flows
14	Statement of Accounting Policies
15	Notes to the Performance Report

Chairperson's Report

The Nest Collective NZ Charitable Trust For the year ended 31 December 2023

The Board of The Nest Collective is delighted to present our Annual Performance Report 2023 to our community and supporters.

Across Aotearoa New Zealand, 1 in 8 babies live in a whānau experiencing material hardship - that's around 7,120 babies! During 2023, we sent out 857 packs to whānau across the motu. It is only a small contribution to this scary number, but behind every one of those packs is a baby (or 2, or 3) that can be kept warm and safe in its whare (home). This is the impact of our collective work, and it's truly inspiring.

Joining the Board as Chair at the beginning of the year started a time of learning and transition for me personally and the Board as a governance group. I feel very privileged to lead a Board composed of skilled and talented people. Thank you to all our trustees for your warm welcome and support over the past year.

The Nest Collective is managed by a very small but extremely mighty team of paid staff who work less than one full-time equivalent in total. What they achieve in the short time they have available is nothing short of incredible. Their dedication, commitment and passion for The Nest Collective is truly inspirational. Ngā mihi maioha to our National Manager (and trustee) Natalia Karacaoglu, our Marketing Manager Amelia Crundwell and our Operations Manager Naomi van Vliet.

With such a small paid staff, The Nest Collective could not operate without its volunteers, who are spread across the motu. In particular, I would like to thank the Branch Managers of our six branches, all of whom give significant time and energy to support whānau in their communities. They run their volunteer teams, ensure sufficient stock, organise the packing of our pēpi packs, reach out and connect with their communities, and so much more.

Ngā mihi nui to our volunteer teams who do the mahi, including washing and sorting donated goods, preparing our packs for distribution, liaising with community partners, organising collection or sending of packs, keeping things organised at the various hubs and helping with behind the scenes administration.

A special thanks to the over 1,100 members of The Nest Makers which is a Facebook group connecting crafters across the motu. The quantity and quality of knitting, crocheting and sewing that this group produces is truly mind-blowing. These items make up a significant part of every pack we send out and ensure pēpi are kept snug and warm. Your collective skills astound me!

Cyclone Gabrielle and the Auckland flooding started the year in a dramatic fashion. Our teams in both areas did a phenomenal job continuing to support their communities. We were heartened by the support from across the motu from our other branches and from funders and businesses that were happy to provide support.

Opening our sixth branch in Dunedin after quite a long gestation was a major highlight this year. The Branch Managers have given a huge amount of time and energy to get the branch up and running and support whānau in the lower South Island. They were delighted to be a charity recipient of the Dunedin Craft Beer and Food Festival, which gave their profile and their bank account a significant lift.

Other highlights included the enormous amount of nappies donated to us by Noopii, and it is hard to express how grateful we are for that massive donation. We were also pleased to have every branch settled into suitable premises. Our management team's focus this year has been strengthening and improving our systems, processes, and policies across the whole organisation. It's not the most exciting job in the world, but it is critically important, and we are progressing. For this work, I would particularly like to thank Carolyn Merryweather for her work on policies and processes and our trustee, Glen Willams, for his work with Natalia to improve our financial systems.

Across the motu, many community partners refer their clients to us for support. Ngā mihi nui to the social workers, midwives, kaiāwhina, nurses and all other community partners who recognise the need, liaise with our branches and often collect and deliver the packs to whānau. Without your collective effort, we would not be able to support these families.

Funding, as with most charities in the current economic climate, continues to be a difficulty constantly faced by our management team. The annual grant treadmill is a huge amount of work for all, and finding alternative funding streams is high on our list of priorities, but it continues to provide challenges.

Finally, I would like to thank all our funders, donors and supporters. There are far too many to mention here, but you find them listed later in the report. Without you all, The Nest Collective could not exist. Every contribution you make to The Nest Collective, whether a knitted newborn hat or a major grant or donation, is very much appreciated, and we thank you from the bottom of our hearts.

WATH.

Ngā mihi nui

Wendy Thompson
Board Chair

National Manager's Report

The Nest Collective NZ Charitable Trust For the year ended 31 December 2023

It is with great pleasure that we present the 2023 Annual Report. What a year it has been, and as we celebrate our third year, it is nice to reflect on the huge amount our small charity has achieved.

Firstly, my thanks go to our Board of Trustees. To Wendy, thank you for accepting our request and hitting the ground running as our new chairperson. Your mentorship and dedication have been appreciated and invaluable. Thank you to Glen for the support from the beginning of this journey back in 2020. But especially thank you for the unbelievable amount of hours you have put in to help us build our financial systems as we rapidly grow. I am eternally grateful for your big heart and amazing brain! To Libby, Kate, Nicolette and Tony, thank you for your continuous support from around the country and the globe. I am so grateful for your expertise, passion, advice and commitment.

I also must thank the fierce wāhine in our management team and managing branches nationwide. Amelia, Naomi and Carolyn, no words can thank you for your commitment and hard work, within very small paid hours, to keep this all going. Your support to me, personally, is also something I am so grateful for. Libby, Lucy, Sue, Angela, Shirley, Rae, Heather, Glenis, Gerardine, Jenny, Laura and Chelsea - our branch managers, your kindness, commitment and mahi consistently blow me away. Thank you!

The year started with an extremely sad and shocking time for Aotearoa with first flooding and then Cyclone Gabrielle. Our incredible team of volunteers in Tairāwhiti, with the support of our amazing supporters, donors and other branches, achieved a lot and quickly. Helicoptering in nappies to the emergency response centres was a highlight and testament to the generosity of many. Whilst it was a steep learning curve on logistics, it was also a fantastic display of collaboration and teamwork! Our team was at the emergency centres, supplying packs directly to families that had lost everything. We are so proud of our volunteers and what we achieved for the community during this time. The support from our donors has also enabled us to continue to support Tairāwhiti, as we have seen a massive increase in demand for our pēpi packs in the region.

Our Auckland branch supported both Auckland and Northland whānau through our community partners. From pēpi packs to additional towels, portacots, and other necessities for those in emergency accommodation, we are proud that this support has continued longterm past the early recovery. We were also pleased to be able to provide large items, including cots, bassinets, prams and car seats, not just immediately but in the months following to families impacted. We would like to make a special mention to the Ministry of Social Development and the Red Cross for the funding to ensure this support was possible.

One of the best phone calls in 2023 was the offer of pallets of free nappies - an incredible gesture of generosity and support from Noopii. Every pēpi pack that has gone out since is a reminder of this kindness. The logistics of moving nappies around the country required some help. We were so grateful to The Kindness Collective for their tireless work to make it happen. Thank you!

I also had the honour of visiting all our branches in person this year. What an absolute privilege it was to sit in a room with the people who give so much of their time to make The Nest Collective a reality. Each manager and the branch volunteers were so welcoming, and it was lovely to see the impressive spaces and systems that support their mahi. Thank you for your hospitality.

To every volunteer - regardless of how big or small your role - we say ngā mihi nui. We see how much time, dedication and hard work you give to The Nest Collective and the families we serve. Whether you are washing, collecting, sorting, fixing, checking, making, packing or working behind the scenes on grants, fundraising, marketing, finances or administration - you are why each pēpi pack is possible. Thank you.

One of our greatest achievements in 2023 was getting each branch into a space that enabled us to expand our volunteer teams and connect with more community partners to further meet the needs of our communities. These spaces will support further growth, alongside the addition of co-managers in each branch to ensure our volunteers are well supported.

Our crafting group, The Nest Makers, continues to grow and ensure every pēpi pack is full of warm, gorgeous handcrafted essentials. It's outstanding! The collaboration and sharing between over 1,100 crafters across the country is beautiful. We're grateful for every item we know will be treasured by those who receive them.

It's an honour to grow our connections with our community partners. We see these partners showing up, no matter what, with huge smiles and gratitude, and we love being able to work together to help whānau in need.


One of our biggest jobs is ensuring our hard-working teams have the funds to keep going. As all small charities know, this is incredibly challenging. So, to the grant funders who have believed in us and supported us not just this year but for three years

now, we thank you from the bottom of our hearts. Thank you to our donors who give their hard-earned money to support their community and us! Every dollar means so much to a charity like ours, and we are so grateful.

Finally, to the whānau we provide our packs to, we hope you feel the love that your pack represents and the strength we send you during these challenging but joyful days.

We enter 2024 knowing the cost of living crisis will mean the need for our services will be like no other. We are working so hard to ensure we rise to meet this demand, and I know that with the hundreds of special humans involved in making The Nest Collective what it is, we can do this!

“Remember, there’s no such thing as a small act of kindness. Every act creates a ripple with no logical end.”



Natalia Karacaoglu

National Manager

Entity Information

The Nest Collective NZ Charitable Trust For the year ended 31 December 2023

'Who are we?', 'Why do we exist?'

We have branches in Auckland, Gisborne, Kāpiti, Wellington, Christchurch and Dunedin which serve families from Northland to Southland. These branches rely on donations (both physical and financial) to provide free pēpi packs to families via social workers, midwives, kaiāwhina and local community partners.

In 2023, both poverty measures we follow have increased. One in eight (12.5%) New Zealand children live in households reporting material hardship. Almost three in four households in hardship report being very limited in their ability to purchase clothes.

Children living in areas with the highest deprivation scores are twice as likely to be admitted to hospital than children in areas with the lowest scores. Sudden unexpected death in infancy is a leading cause of preventable death among babies in Aotearoa New Zealand. The ideal place for a baby to sleep is in their own safe sleeping space, on a safe mattress with safe bedding.

Many families face impossible financial decisions such as choosing between paying the power bill or buying warm clothing for their children. Not having enough resources to support a baby's wellbeing, such as nappies and warm clothes, creates stress. This stress contributes to higher rates of postpartum depression among low-income mothers.

Material resources are critical to providing children with an opportunity to reach their health, educational and social potential. Investment in the first 1,000 days is vital to ensure that every tamaiti (child) gets a great start in life.

Legal Name of Entity

The Nest Collective NZ Charitable Trust

Entity Type and Legal Basis

Incorporated registered Charitable Trust

Registration Number

CC58638

Entity's Purpose or Mission

Our vision is that all New Zealand babies are given a great start in life to enable them to flourish.

The Nest Collective partners with social workers and other local community organisations to provide free packs of baby essentials for families in need. Our packs result in improved living standards for babies and children, a reduced financial burden for families, an improvement in mental health for parents and an ability to focus on other aspects of whānau life once the essentials are provided.

Entity Structure

We are a registered charity under the Charities Act 2005.

Main Sources of Entity's Cash and Resources

The Nest Collective has received its income from a mixture of grants and donations of both money value and goods received.

Main Methods Used by Entity to Raise Funds

Grants, donations and fundraising activities.

Entity's Reliance on Volunteers and Donated Goods or Services

Our entity relies heavily on volunteers and donated goods. Volunteers assist by collecting donations, sorting the offerings, and assembling our packs and clothing bundles for the families. Over 90% of our packs are filled with donated items and crafted items by our Nest Makers group. Our volunteers also manage the branches, communicate with charity partners and organise fundraising events.

Physical and Postal Address

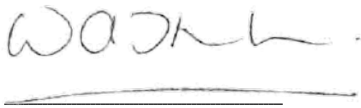
9 Ron Deal Way, Epunu, Lower Hutt, Wellington, New Zealand, 5011

Approval of Financial Report

The Nest Collective NZ Charitable Trust For the year ended 31 December 2023

The Trustees are pleased to present the approved performance report including the historical financial statements of The Nest Collective NZ Charitable Trust for year ended 31 December 2023.

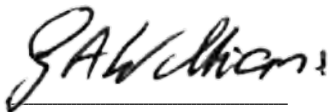
APPROVED



Wendy Thompson

Chairperson

Date 28 June 2024



Glen Williams

Treasurer

Date 28 June 2024

Statement of Service Performance

The Nest Collective NZ Charitable Trust For the year ended 31 December 2023

Description of Entity's Outcomes

Our entity's outcomes directly reflect the following United Nations Sustainable Development Goals:

- Goal 1: No poverty
- Goal 10: Reduced inequality
- Goal 12.3: Ensure sustainable consumption and production patterns

We aim to use our values of collaboration, integrity, sustainability, equity and manaakitanga to achieve our mission for Aotearoa's families.

Description and Quantification of the Entity's Outputs

In 2023 we provided 857 packs to families across Aotearoa and all ethnic groups, which is a 19% increase from 2022 (722 packs).

Half of our packs (50%) supported whānau Māori and Pasifika families, 48% supported single mothers and 41% to parents aged 25 and under.

Additional Output Measures

The Nest Collective understands the value in supporting those who are most vulnerable. The effects of natural disasters and the cost of living crisis continues to have a significant impact across these communities.

Despite many challenges over the past few years we have been able to meet every pack request we received by working as a team across the country and provided the service many families desperately needed during these difficult times. We also changed the way we had been delivering packs, and started to use a courier to meet the need.

We are very proud of our ability to keep up with the huge increase in demand and adapt as a team.

Statement of Financial Performance

The Nest Collective NZ Charitable Trust For the year ended 31 December 2023

	NOTES	2023	2022
Revenue			
Donations, fundraising and other similar revenue			
Grants		171,394	119,775
Donations		48,162	43,404
Total Donations, fundraising and other similar revenue		219,556	163,179
Receipts from providing goods or services		-	6,800
Interest Income		1,698	-
Total Revenue		221,254	169,979
Expenses			
Cost of packs donated to families	1	113,508	96,301
Premises costs		45,029	10,537
Volunteer and employee related costs		37,943	22,045
Fundraising and marketing		2,517	2,694
Administration		4,584	4,168
Board costs		3,673	-
Total Expenses		207,254	135,745
Surplus/(Deficit) for the Year		14,000	34,234

This statement should be read in conjunction with the Accounting Policies and Notes to the Financial Statements.

Statement of Financial Position

The Nest Collective NZ Charitable Trust As at 31 December 2023

'What the entity owns?' and 'What the entity owes?'

	NOTES	31 DEC 2023	31 DEC 2022
Assets			
Current Assets			
Cash and Cash Equivalents	2	143,624	80,132
Accounts Receivable		398	-
Prepayments		4,118	-
GST		7,273	5,477
Total Current Assets		155,413	85,610
Total Assets		155,413	85,610
Liabilities			
Current Liabilities		1,687	519
Income in Advance - Grants		95,471	40,836
Total Liabilities		97,158	41,355
Total Assets less Total Liabilities (Net Assets)		58,255	44,255
Accumulated Funds			
Opening Balance		44,255	10,021
Current Year Earnings		14,000	34,234
Total Accumulated Funds		58,255	44,255

This statement should be read in conjunction with the Accounting Policies and Notes to the Financial Statements.

Statement of Cash Flows

The Nest Collective NZ Charitable Trust For the year ended 31 December 2023

	2023	2022
Cash Flows from Operating Activities		
Donations, fundraising and other similar receipts	287,893	148,179
Receipts from providing goods or services	-	6,800
Interest, dividends and other investment receipts	1,698	-
GST	10,918	6,879
Total Cash Flows from Operating Activities	300,509	161,858
Cash Flows on Operating Activities		
Payments to suppliers and employees	(237,017)	(153,584)
Total Cash Flows on Operating Activities	(237,017)	(153,584)
Cash Flows From/(To) Operating Activities	63,491	8,274
Net Increase/(Decrease) in Cash	63,491	8,274
Bank Accounts and Cash		
Opening cash	80,132	71,859
Net change in cash for period	63,491	8,274
Closing cash	143,624	80,132

This statement should be read in conjunction with the Accounting Policies and Notes to the Financial Statements.

Statement of Accounting Policies

The Nest Collective NZ Charitable Trust For the year ended 31 December 2023

Basis of Preparation

The entity has elected to apply PBE SFR-A (NFP) Public Benefit Entity Simple Format Reporting - Accrual (Not-For-Profit) on the basis that it does not have public accountability and has total annual expenses equal to or less than \$2,000,000. All transactions in the Performance Report are reported using the accrual basis of accounting. The Performance Report is prepared under the assumption that the entity will continue to operate in the foreseeable future.

Goods and Services Tax (GST)

The entity is registered for GST. All amounts are stated exclusive of goods and services tax (GST) except for accounts payable and accounts receivable which are stated inclusive of GST.

Income Tax

The Nest Collective NZ Charitable Trust is wholly exempt from New Zealand income tax having fully complied with all statutory conditions for these exemptions.

Bank Accounts and Cash

Bank accounts and cash in the Statement of Cash Flows comprise cash balances and bank balances (including short-term deposits) with original maturities of 90 days or less.

Changes in Accounting Policies

There have been no changes in accounting policies. Policies have been applied on a consistent basis with those of the previous reporting period.

Notes to the Performance Report

The Nest Collective NZ Charitable Trust For the year ended 31 December 2023

	2023	2022
1. Analysis of Pack Contents		
Bedding	47,615	53,628
Health and safety items	8,054	16,081
Nappies and wipes	5,578	13,644
Feeding items	7,004	3,197
Books and toys	2,257	1,709
Clothing	1,210	697
Parent items	-	97
Crafting materials	2,105	475
Packaging and courier costs	9,333	6,344
Large extra items (safe sleep spaces, prams, etc.)	30,352	430
Total Analysis of Pack Contents	113,508	96,301

2. Analysis of Assets

Bank accounts and cash

Interest Earning Account (From June 2023)	127,518	-
Operations Account	7,201	29,968

Branch Small Purchases Accounts (From June 2023)

Auckland	430	4,058
Christchurch	310	11,002
Dunedin	3,101	-
Gisborne	829	18,166
Kāpiti	1,712	6,691
Wellington	2,523	10,249
Total Branch Small Purchases Accounts (From June 2023)	8,905	50,165

Total Bank accounts and cash	143,624	80,132
-------------------------------------	----------------	---------------

3. Related Parties

There were no transactions involving related parties during the financial year.

4. Events After the Balance Date

There were no events that have occurred after the balance date that would have a material impact on the Performance Report (Last year - nil).

5. Ability to Continue Operating

The entity will continue to operate for the foreseeable future.